

TYPE RM-COOL



Brushless electronically controlled motor

Adjustable speed of 1 to 3,240 min⁻¹

For short-term and continuous operation

Made of PPS, PP and PVDF

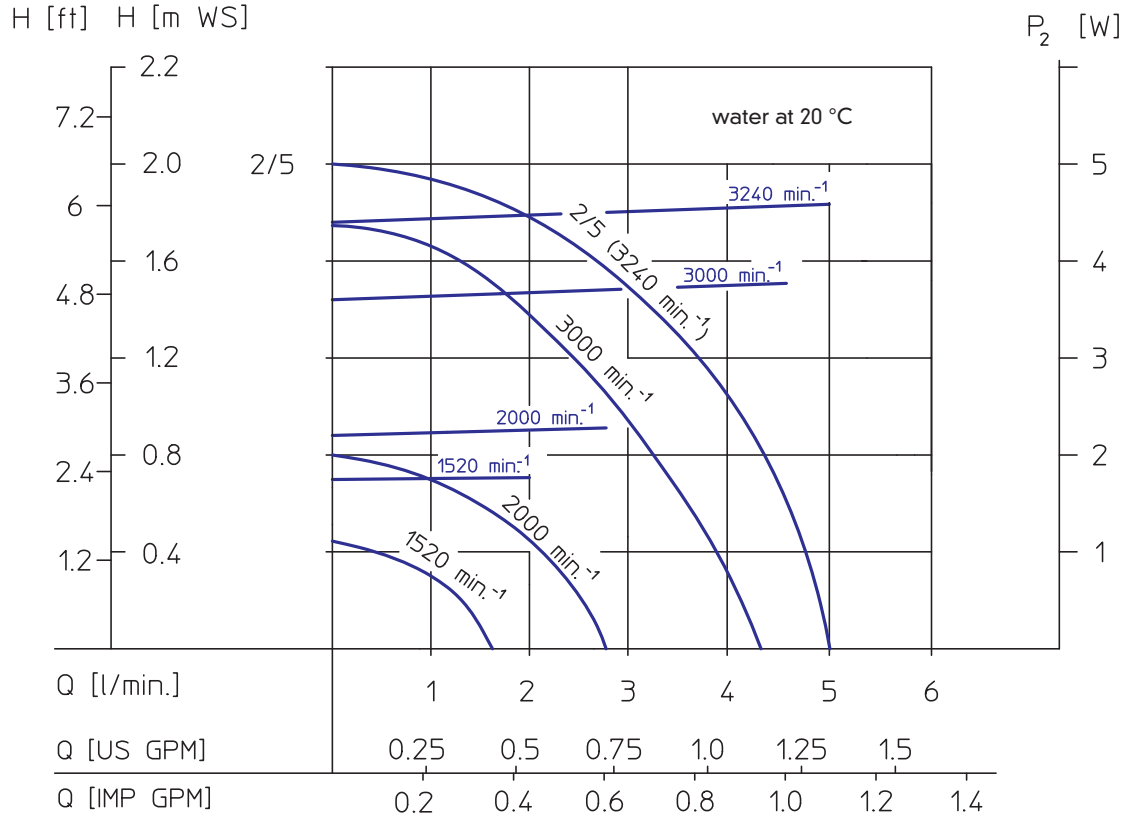
Delivery rate up to 5 l/min

Delivery head up to 2 m wc

No shaft seal required

The magnetically coupled centrifugal mini-pump of the RM-Cool type 0.5 is the ideal high-performance cooling system to absolutely reliably remove heat from laser devices and computers and is also used in process engineering and solar energy technology etc.

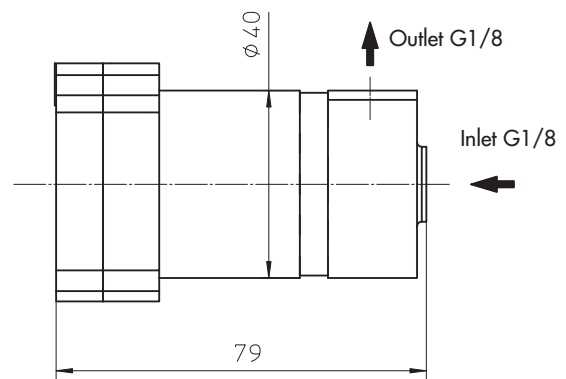
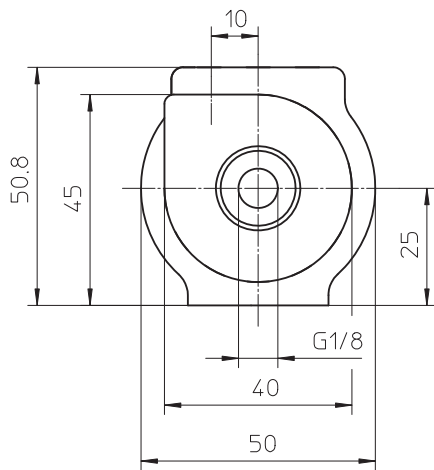
PERFORMANCE CHARTS





TECHNICAL DATA

motor	brushless electronically controlled motor
voltage	12, 24 or 48 V dc; direct connection to the power supply unit of a PC, for example
motor capacity	7 Watt
speed	adjustable from 1 to 3240 min ⁻¹
delivery rate	up to 5 l /min
delivery head	up to 2 m wc
ports	suction side/discharge side G 1/8"
materials	PPS, PP or PVDF
bearings	oxide ceramic
sealing	FKM, EPDM or NBR
temperature range	up to 100 °C
weight	approx. 175 – 215 g



electrical connection

